



# AWAYUKI VILLA

THE PAVILIONS



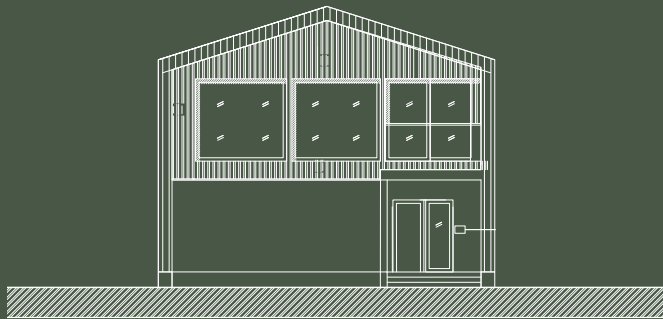


Mount Yotei, Hokkaido, Japan



*"I wonder if the snow loves the trees and fields, that it kisses them so gently? And then it covers them up snug, you know, with a white quilt; and perhaps it says, "Go to sleep, darlings, till the summer comes again."*

- Lewis Carroll, Alice's Adventures in Wonderland & Through the Looking-Glass

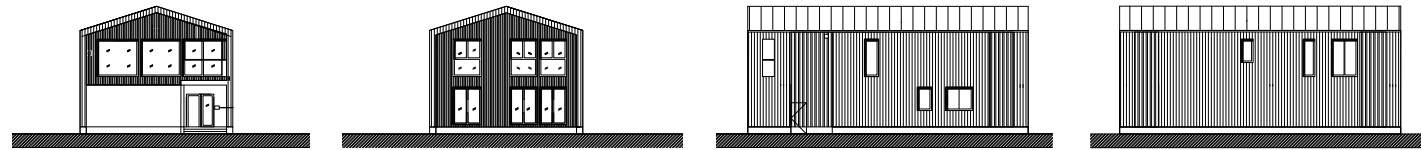


Our vision comes in colours - the white of the snow in winter, the green of its ferns and meadows in summer, the blues of the rivers and streams. A return to clean air, adventure and romance in one of Asia's most pristine landscapes. Enjoy and have fun.

Gordon Oldham

# AWAYUKI VILLA

THE PAVILIONS



## STYLE

Awayuki Villa's dual key cosy three-bedroom en-suite layout incorporates plush mid century modern furniture and timeless finishing's influenced by European design with a Japanese touch. Use it as two separate units (GF and 1F) or as a whole villa for the family.

## NUMBER OF BEDROOM








3 Bedrooms / 3.5 Bathrooms

*\*Additional en-suite room options available in place of garage for an additional fee. Enquire for options.*

## SIZE (SQM)

218m<sup>2</sup>, two-storey

## FEATURES

-  Forest view / Yotei view
-  Ski/snowboard room
-  Laundry room
-  Wood burning fire place
-  Garage space for two
-  Gated yard area
-  Owner storage



Awayuki Villa, Niseko



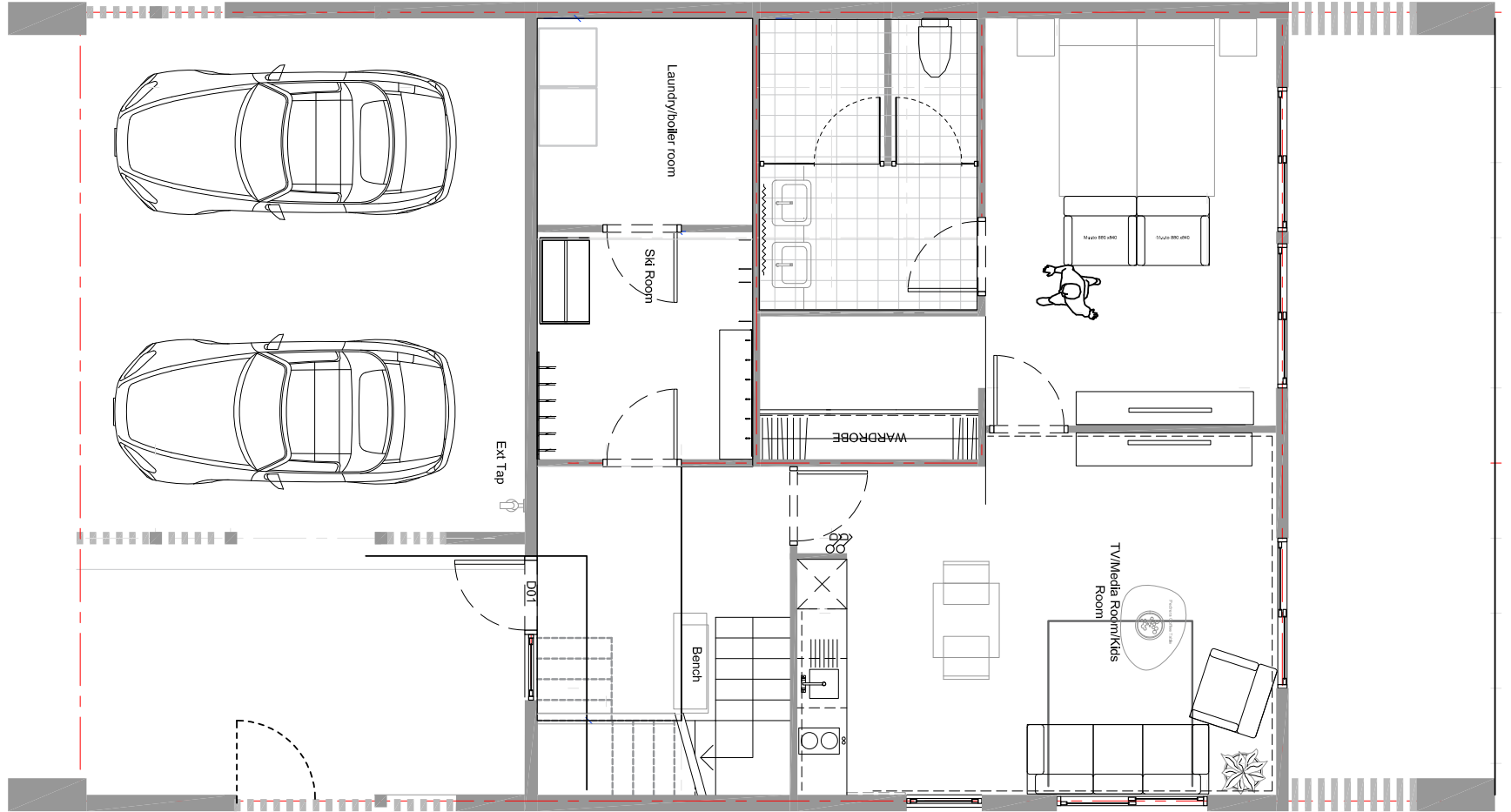
Living room



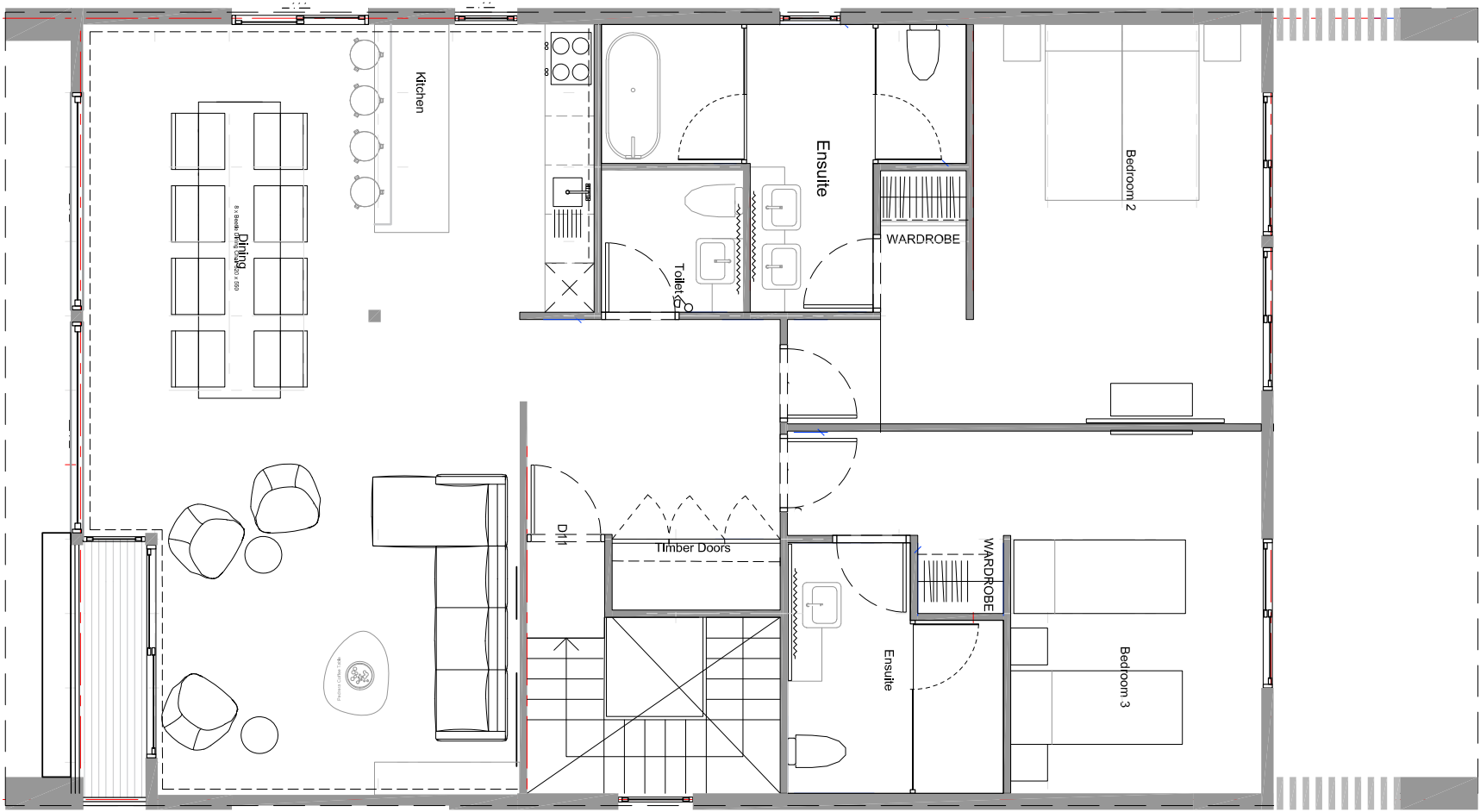
Downstair Living Room



GROUND FLOOR







FIRST FLOOR





Master Bathroom

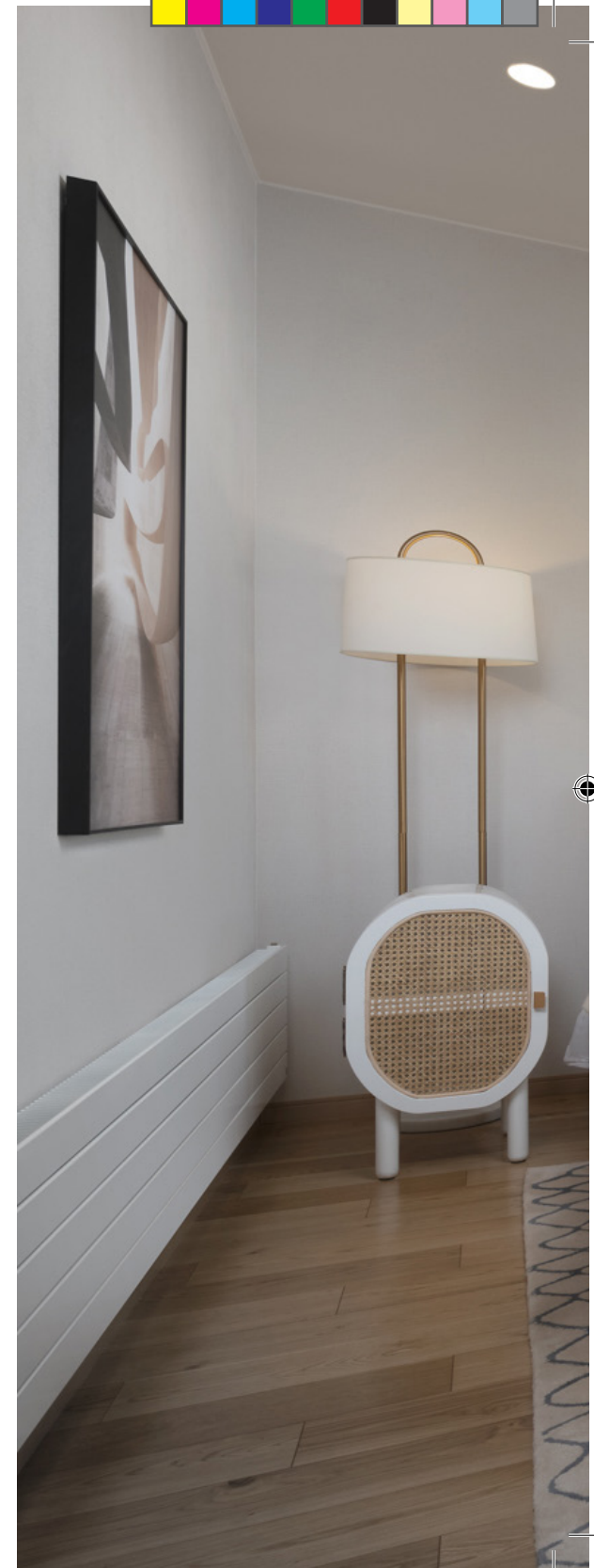


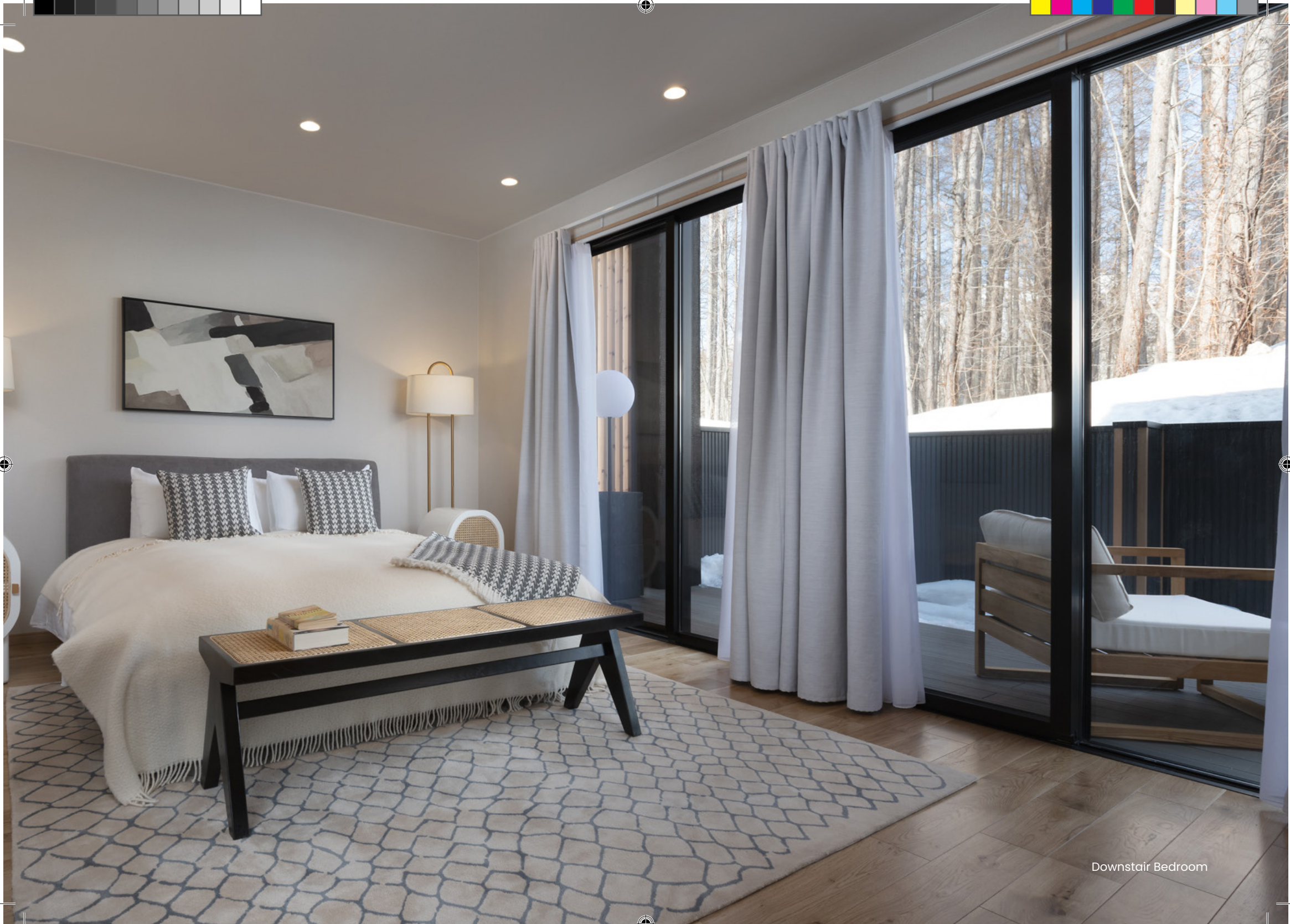


Master Bedroom



Downstair bathroom





Downstair Bedroom



343

343

HIRAFU SKI LIFTS  
3 minutes

GINTO RESIDENCES

THE PAVILIONS  
NISEKO RESIDENCES

GINTO VILLAGE

THE PAVILIONS NISEKO  
HOTEL & RESORT VILLAS

15

13

12

10

8

6

3

39

38

37

36

35

34

33

32

80

83

88

85

87

86

KATSURA VILLA

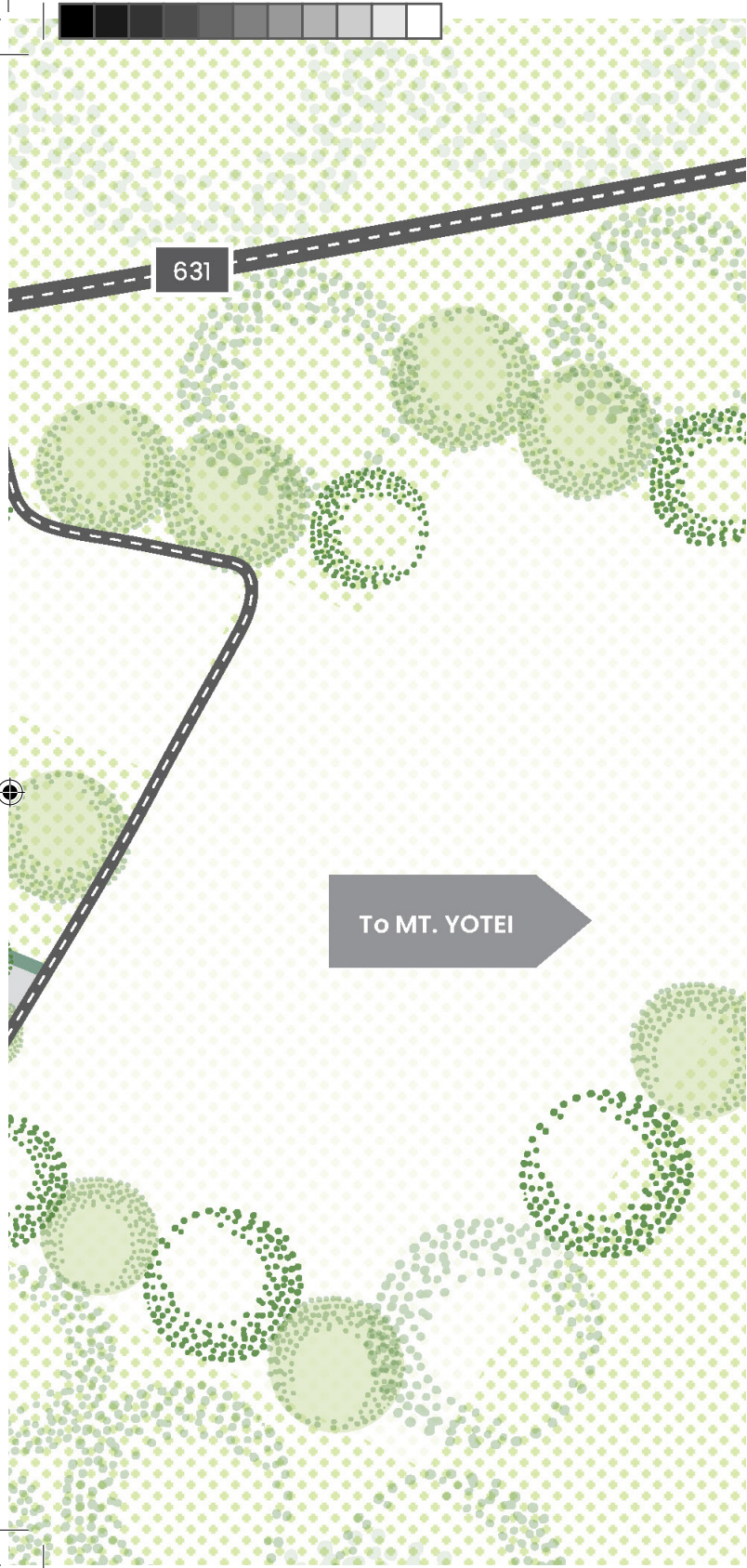
HINOKI VILLA

KEYAKI VILLA

A  
B  
C  
D  
E  
F  
G  
H  
I  
J  
K  
L  
M  
N  
O

P  
Q  
R  
S

P



- SITE BORDER
- GINTO HIKING TRAILS
- GINTO RESIDENCES
- THE PAVILIONS NISEKO HOTELS & RESORT VILLAS
- CLUBHOUSE KOMINKA (Reception, Bar, Lounge & Restaurant)
- ONSEN HOUSE
- SPA KOMINKA (Gym, Spa & Yoga Room)
- GINTO VILLAGE SHOPS & RESTAURANTS
- THE PAVILIONS NISEKO RESIDENCES (Hotel Expansion)
- SPECIAL PROJECT
- P PARKING AREA



## PERFECT TURN-KEY LIFESTYLE INVESTMENT

The Pavilions Niseko Resort Villas offers a fine balance of ideal holiday home and perfectly managed asset.

The Resort Villas come fully furnished with plush midcentury modern furniture and timeless finishing's influenced by European design with a Japanese touch.

Everything needed to enjoy your holiday comfortably in style awaits.



Second Bedroom







### **TIMELESS MID-CENTURY DESIGN**

Elegant hand-picked mid-century modern pieces selected with design and both comfort and function in mind. The use of temper rich woods with neutral cream, Travertine Stone, create a welcoming palette along with furnishing inspired by Gio Ponti, Pierre Jeanneret and Charlotte Perriand.



\*The information, photographs, pictures, products displayed herein is for reference only and shall not form part of any offer, contract, representation or warranty expressly or impliedly.





## OWNER LIFESTYLE BENEFITS

As an owner of a Pavilions Residence, you join a select group of discerning individuals as part of the Privilege Club. As a member you have rights to the highest levels of personalised service with access to all the inspired amenities of The Pavilions Hotels & Resorts worldwide as well as REVĪVŌ Wellness Resorts.

## BE READY TO EXPAND YOUR EXPECTATIONS

- Owner's concierge service
- Luxury rental & property management services through designated partners
- Priority reservations at Pavilions Niseko Signature Restaurant & Ginto Village restaurants
- Complimentary shuttle to Grand Hirafu ski lifts & Hirafuzaka
- Discount in outlets (F&B, Spa and Special Events)
- 20% off the best available rate at Pavilions Niseko Hotel & Resorts
- Ginto Village Owner's Club Membership
- Complimentary Chef's dinner for two in your birthday month
- Complimentary access to our indoor/outdoor natural onsen
- Complimentary access to our gym and yoga studio

## GLOBAL HOTEL BENEFITS

- 10% discount at The Pavilions Hotels & Resorts & REVĪVŌ Wellness Resorts restaurants
- 10% off the best promotional rate at the time at Pavilions Hotels & Resorts & REVĪVŌ Wellness Resorts
- 10% discount at Pavilions Hotels & Resorts & REVĪVŌ Wellness Resorts spas group wide
- VIP status at all Pavilions Hotels & Resorts & REVĪVŌ Wellness Resorts group wide

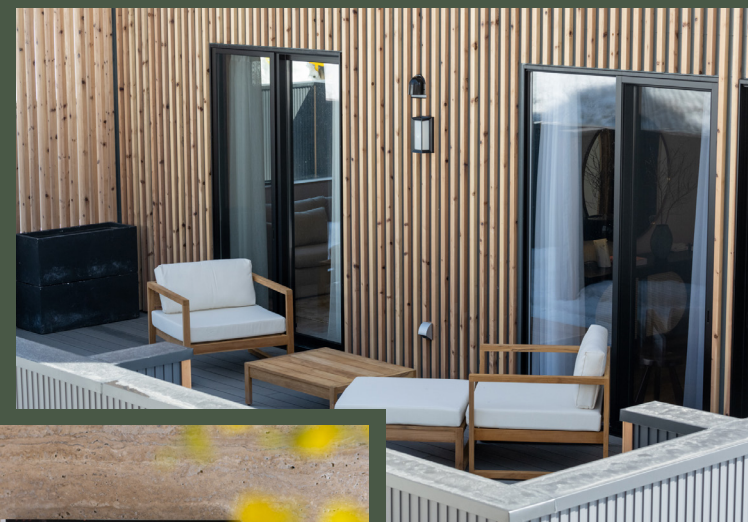
1) These benefits are applicable and redeemable only at The Pavilions Niseko hotel and can be transferred to immediate assignee of the first owner only. Discount not to exceed US\$5,000 annually. Further restrictions and rules and regulations may be adopted by Pavilions in its sole and absolute discretion. The listed services and amenities are available with the payment of association fees or extra add-on service that The Pavilions Niseko will provide and individually charged upon usage. All services are subject to availability, applicable charges and may change from time to time. 2) Subject to availability. 3) For a list of highly vetted luxury property managers enquire [residences@pavilionshotels.com](mailto:residences@pavilionshotels.com) 4) Owned and operated The Pavilions Hotels & Resorts and Revivo restaurants.

## PAVILIONS NISEKO HOTEL

Pavilions Niseko will be designed with a refined, understated elegance, reflecting the sukiya style of architecture.

Nineteen beautifully appointed three-bedroom villas nestled amidst the silent woods, allowing guests to be at one with nature, the magnificence of Mt. Yotei and the surrounding valleys.

Facilities such as Signature Bar and Restaurant, indoor & outdoor onsen pools, spa & fitness centre and a library will also promise our guests a all-inclusive experience.



### THE GINTO TALE – OUR INSPIRATION

Japanese art, culture and folklore constantly inspire us. We particularly love the tale of Tsuki no Usagi, or 'Moon Rabbit': Legend has it that a rabbit, after having proven itself to be the kindest of all animals on earth, ascended to the moon as a god. In honour of the rabbit, we have named the area around Pavilions Niseko, Ginto, which to us means silver rabbit.

Look up and spot the rabbit glowing in the silver light of the moon.



Dining-Kitchen Room



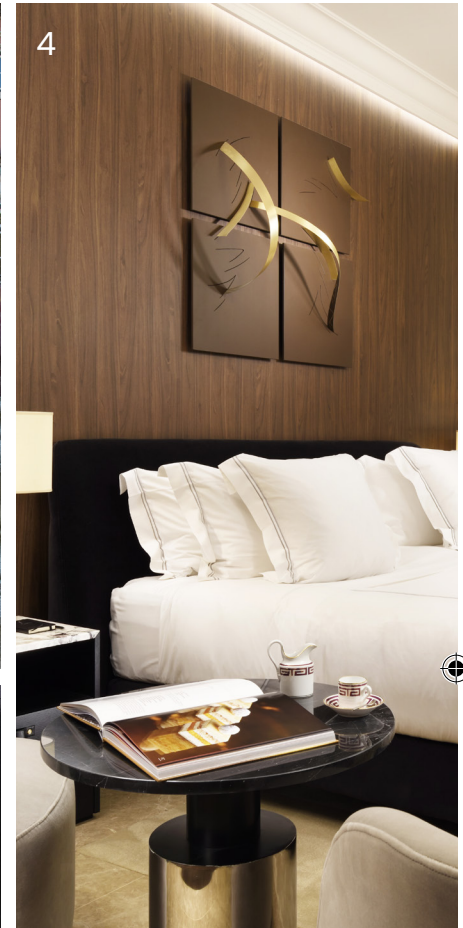
Gordon Oldham

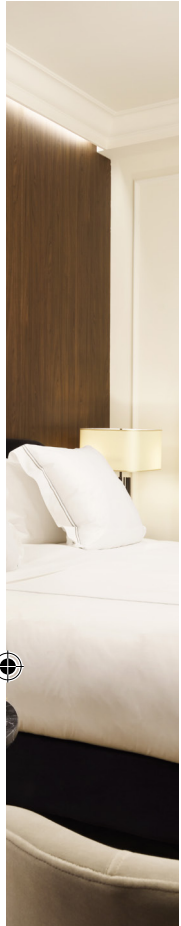
Gordon Oldham, lawyer, entrepreneur, adventurer and philanthropist created Pavilions as a celebration of all the elements that reflects a love of design, life, nature, history and adventure. With award-winning Resorts and Hotels in place, in Bali, Nepal and Thailand, Pavilions embarked on an ambitious expansion plan in 2015, and have now expanded to Amsterdam, Madrid, Rome, Lisbon, and Mongolia as well as expeditionary cruises and the expansion continues hand in glove with its sister REVĪVŌ, a series of luxury wellness retreats.

Today, Pavilions is not restricted to development, sales and marketing of hotels. Pavilions has evolved to include residences, villas, apartments, penthouses and the conservation, restoration, and conversion of historical buildings to create commercially viable developments and provide a heritage experience.

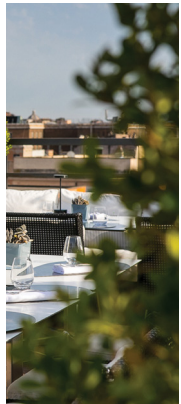
Pavilions attracts like-minded passionate people to join a dream lifestyle that goes far beyond tangible bricks and mortar. Pavilions is about celebrating life with fun and passion.







5



11



Through our love for romance, adventure, culture and the arts, we at Pavilions Hotels and Resorts live to create beautiful memories for our esteemed guests.

With our luxurious all-villa resorts at Pavilions Phuket, Pavilions Bali and Pavilions Himalayas, as well as stunning boutique hotels in Amsterdam, Rome, Madrid, Lisbon (coming soon) and El Nido (coming soon), we have perfected the art of providing best-in-class hospitality for our guests.

For more information:

The Pavilions Hotels & Resorts – Corporate Office

Suite 303, Floor 3, St. George’s Building, 2 Ice House Street, Central, Hong Kong SAR

[residences@pavilionshotels.com](mailto:residences@pavilionshotels.com) | [pavilionsresidences.com/niseko](http://pavilionsresidences.com/niseko)

Left page: 1. Pavilions Bali 2. Pavilions Phuket 3. Pavilions Lisbon 4. Pavilions Roma The First Dolce 5. Pavilions Mongolia 6. Pavilions Madrid 7. Pavilions Himalayas The Lake View 8. Pavilions Himalayas The Farm 9. Pavilions Amsterdam The Torren 10. Pavilions Roma The First Arte 11. Pavilions Niseko



**PAVILIONS HOTELS & RESORTS**

Corporate Office:

Suite 303, Floor 3, St. George's Building, 2 Ice House Street, Central, Hong  
Kong SAR

[residences.niseko@pavilionshotels.com](mailto:residences.niseko@pavilionshotels.com) | [pavilionsresidences.com/niseko](http://pavilionsresidences.com/niseko)